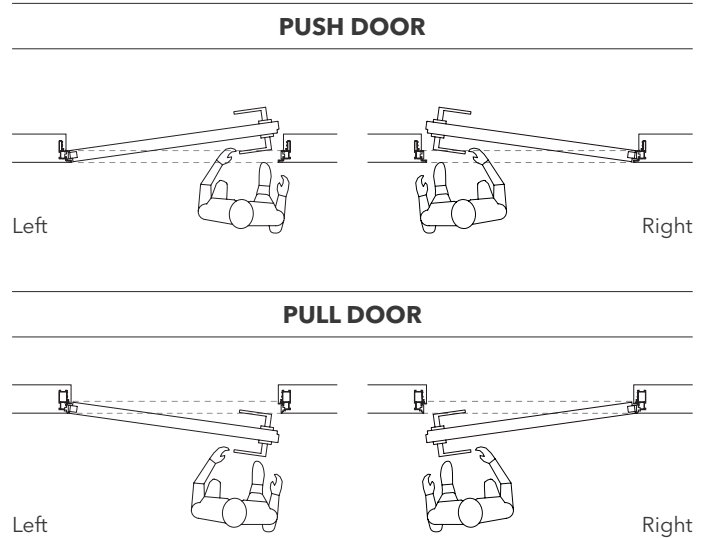
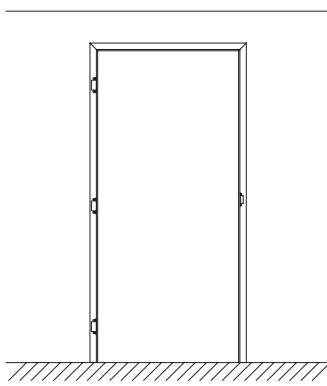


ECLISSE SYNTESIS® LINE BATTENTE

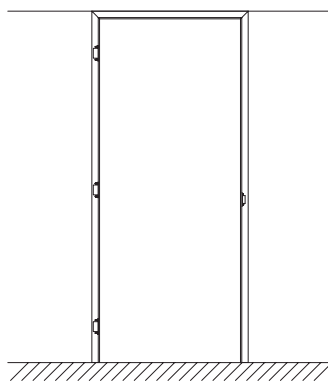
OPENINGS - SET - HARDWARE



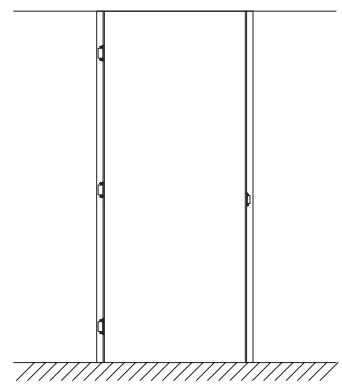
The distinctive feature of ECLISSE SYNTESIS® LINE BATTENTE is the possibility to install the doors flush with the ceiling, thanks to the option with no header, in order to achieve a total integration between door, wall and ceiling.



With header



With header
flush to ceiling



Without header
(the door is flush to ceiling)

SUPPLY METHODS



COMPLETE KIT

The complete KIT includes:
FRAME STRUCTURE + PRIMER-COATED DOOR
+ HARDWARE



SINGLE ELEMENTS

FRAME STRUCTURE
PRIMER-COATED DOOR
HARDWARE

ECLISSE SYNTESIS® LINE BATTENTE

APPLICATIONS

Dimensions are given in mm

The frame fits both stud and solid wall.

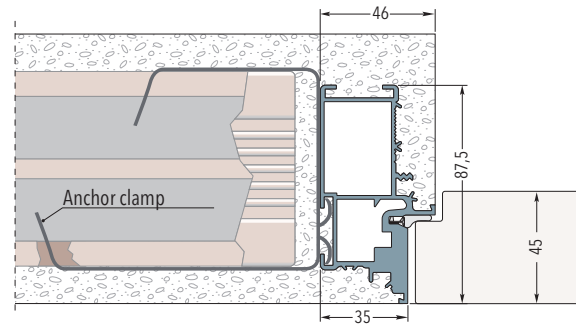
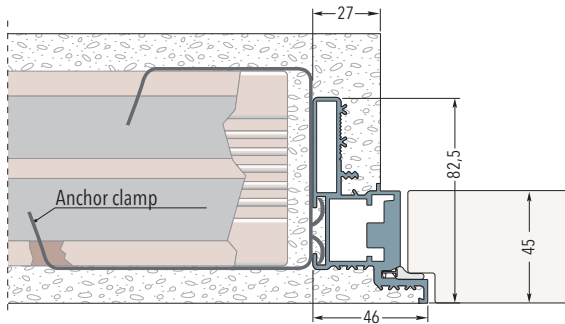
For solid wall 6 clamps are cemented in the special spaces created in the wall.

For stud wall the frame is fixed with screws to the wood or metal structure through the existing holes.

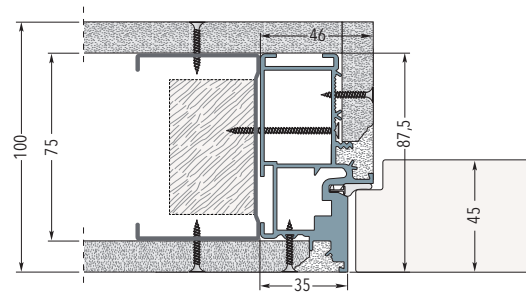
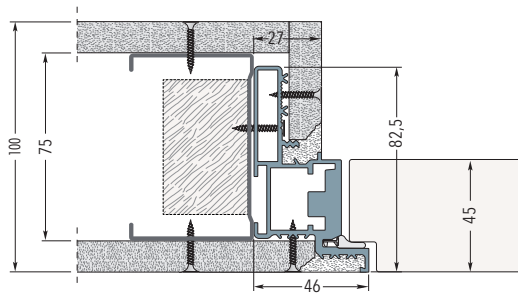
PUSH DOOR

PULL DOOR

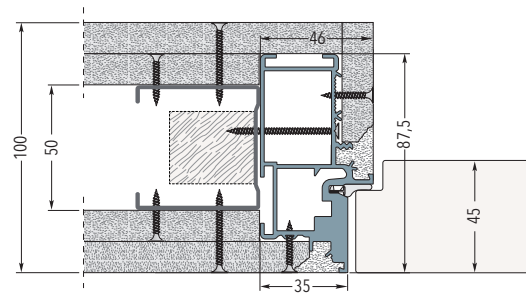
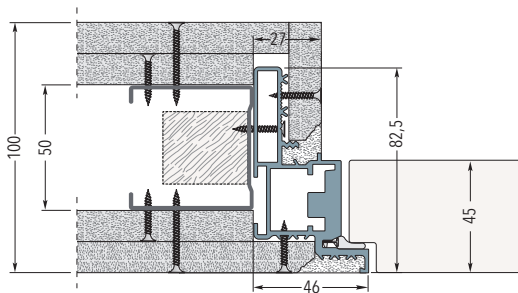
Frame on solid wall



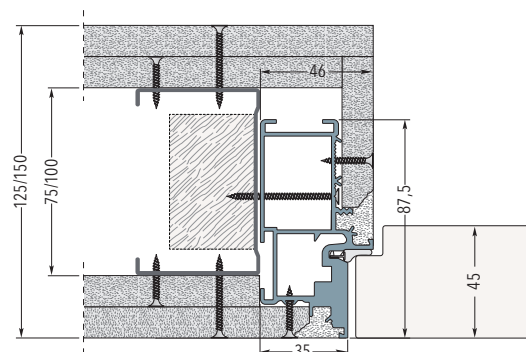
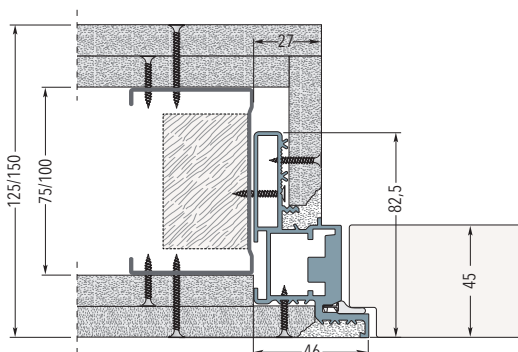
Frame on stud wall with one plasterboard layer - Finished wall thickness 100 mm



Frame on stud wall with two plasterboard layers - Finished wall thickness 100 mm



Frame on stud wall with two plasterboard layers - Finished wall thickness 125/150 mm

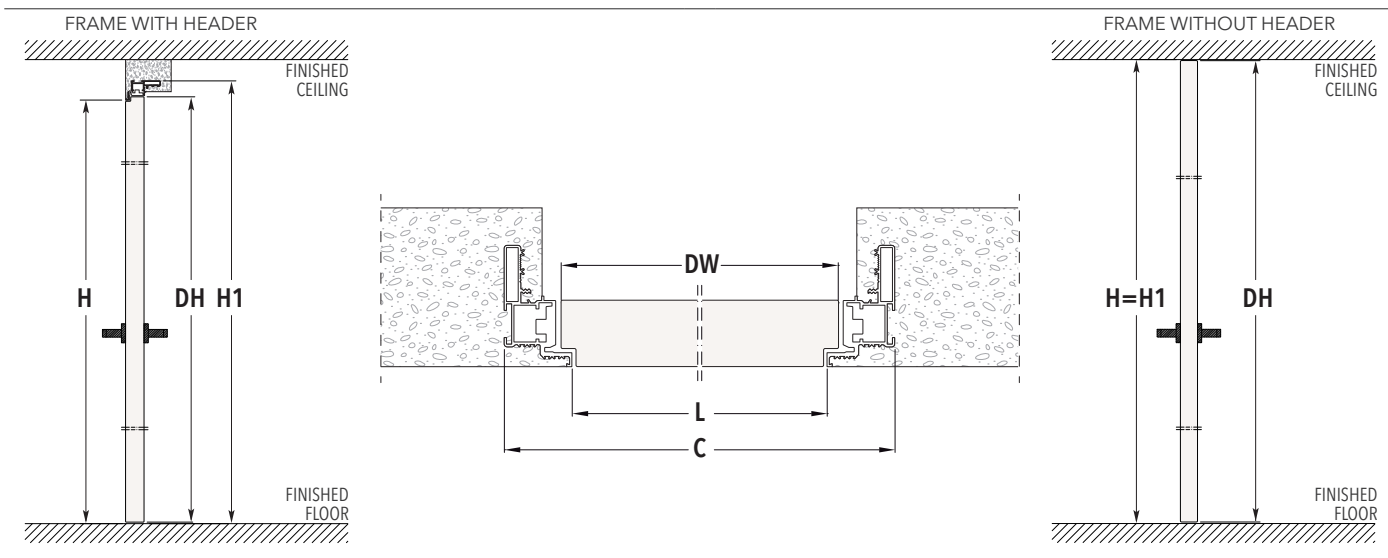


ECLISSE SYNTESIS® LINE BATTENTE

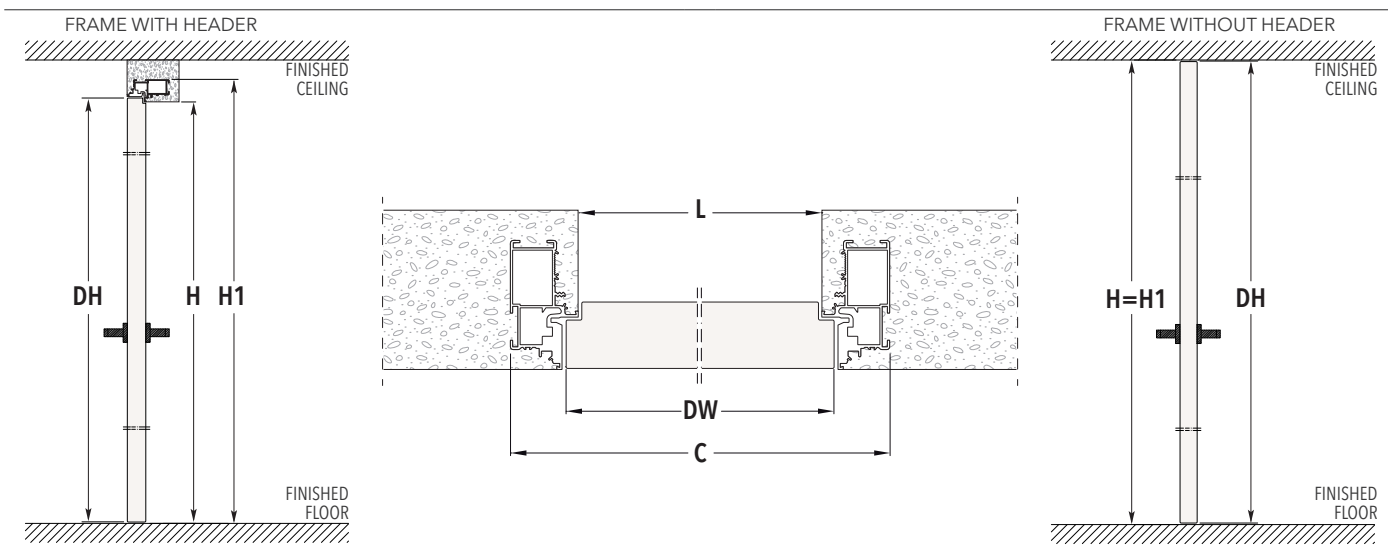
SIZES - FRAME WITH OR WITHOUT HEADER



PUSH DOOR



PULL DOOR



SIZES - FRAME WITH HEADER

PASSAGE SIZE L x H	OVERALL DIMENSIONS C x H1	DOOR PANEL*	
		DW	DH
600 x 2100/2400	692 x 2146/2446	616	2104/2404
650 x 2100/2400	742 x 2146/2446	666	2104/2404
700 x 2100/2400	792 x 2146/2446	716	2104/2404
750 x 2100/2400	842 x 2146/2446	766	2104/2404
800 x 2100/2400	892 x 2146/2446	816	2104/2404
850 x 2100/2400	942 x 2146/2446	866	2104/2404
900 x 2100/2400	992 x 2146/2446	916	2104/2404
950 x 2100/2400	1042 x 2146/2446	966	2104/2404
1000 x 2100/2400	1092 x 2146/2446	1016	2104/2404

SIZES - FRAME WITHOUT HEADER

PASSAGE SIZE L x H	OVERALL DIMENSIONS C x H1	DOOR PANEL*	
		DW	DH
600 x 2700	692 x 2700	616	2693
650 x 2700	742 x 2700	666	2693
700 x 2700	792 x 2700	716	2693
750 x 2700	842 x 2700	766	2693
800 x 2700	892 x 2700	816	2693
850 x 2700	942 x 2700	866	2693
900 x 2700	992 x 2700	916	2693
950 x 2700	1042 x 2700	966	2693
1000 x 2700	1092 x 2700	1016	2693

Dimensions are given in mm

NOTES

- ▶ **Frame with header:** H1 is always 46 mm higher than H.
- ▶ Supplied as standard with 3 hinges. Max. door panel weight with 3 hinges: 50 kg.
- ▶ Available upon request with 4 hinges. Max. door panel weight with 4 hinges: 65 kg.
- ▶ Install at finished floor level.
- * Door panel thickness: 45 mm.

ACCESSORIES

- ▶ Door closer
- ▶ Self-closing door hinge