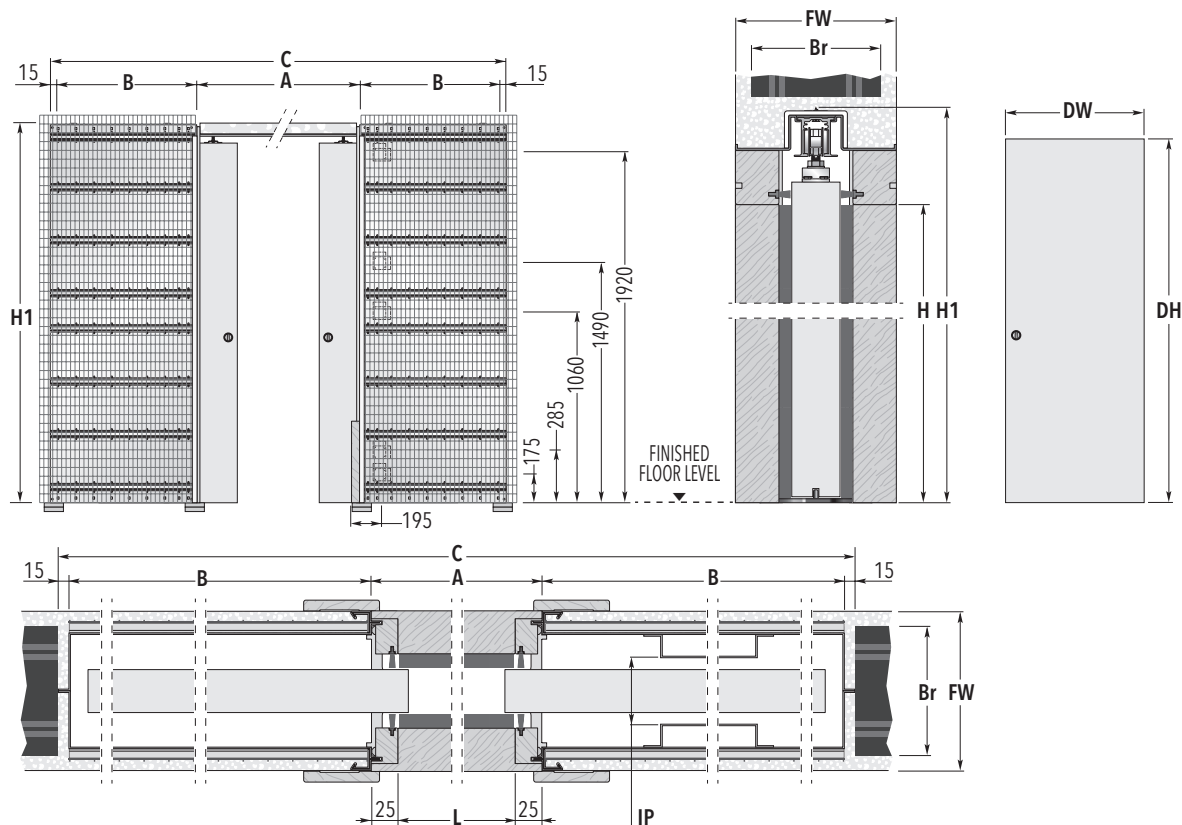


# ECLISSE LUCE DOUBLE

SOLID WALL



**SYSTEMS FOR DOUBLE DOOR** - Measures related to Italian standards, other dimensions available

PASSAGE SIZE <b>L x H</b>	OVERALL DIMENSIONS			DOOR PANEL*	
	<b>C x H1</b>	<b>A</b>	<b>B</b>	<b>DW</b>	<b>DH</b>
1200 x 2000/2100	2530 x 2090/2190	1250	625	615 ÷ 635	2010/2110
1300 x 2000/2100	2830 x 2090/2190	1350	725	665 ÷ 735	2010/2110
1400 x 2000/2100	2930 x 2090/2190	1450	725	715 ÷ 735	2010/2110
1500 x 2000/2100	3230 x 2090/2190	1550	825	765 ÷ 835	2010/2110
1600 x 2000/2100	3330 x 2090/2190	1650	825	815 ÷ 835	2010/2110
1700 x 2000/2100	3630 x 2090/2190	1750	925	865 ÷ 935	2010/2110
1800 x 2000/2100	3730 x 2090/2190	1850	925	915 ÷ 935	2010/2110
1900 x 2000/2100	4030 x 2090/2190	1950	1025	965 ÷ 1035	2010/2110
2000 x 2000/2100	4130 x 2090/2190	2050	1025	1015 ÷ 1035	2010/2110

FINISHED WALL = <b>FW</b>	BRICKS = <b>Br</b>	INTERNAL PASSAGE = <b>IP</b>
<b>150</b> →	120	64

Dimensions are given in mm

## NON-STANDARD SIZES

- ▶ Passage width 600+600÷1300+1300 mm.
- ▶ Passage height 1000÷2600 mm.

## NOTES

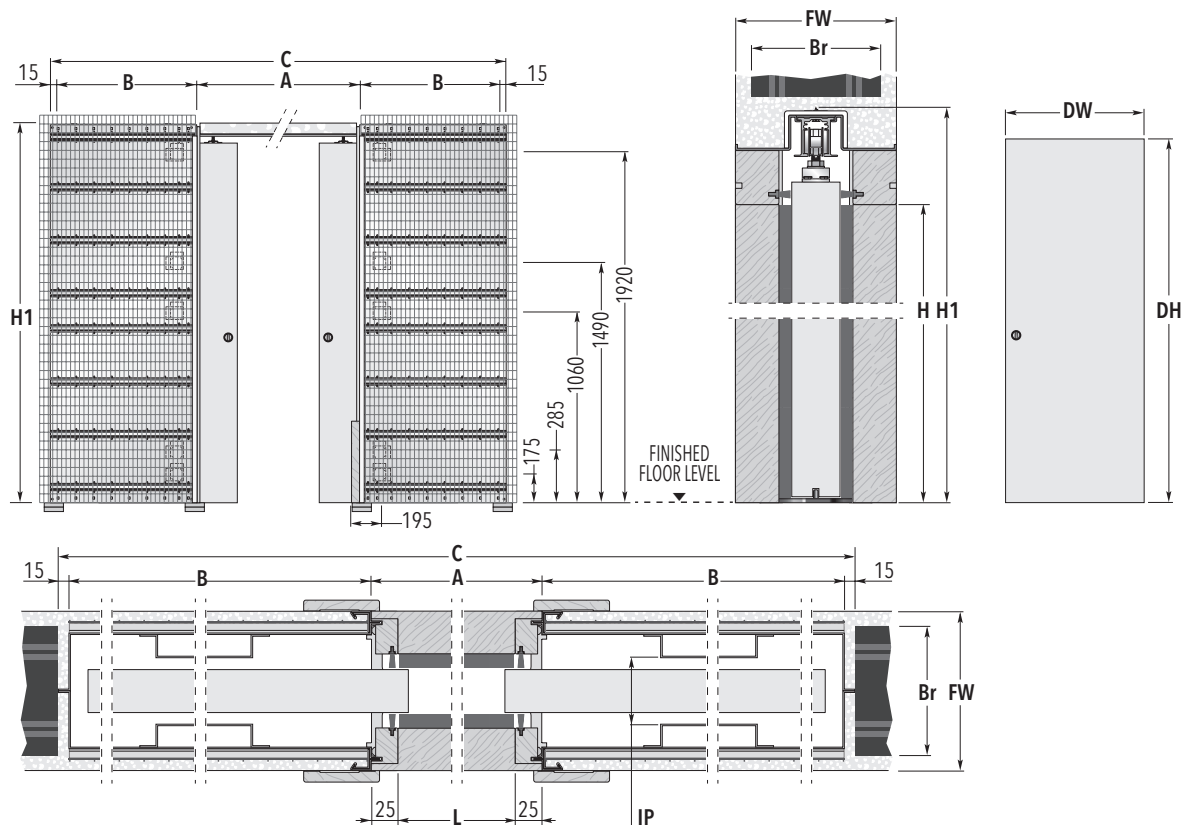
- ▶ Max. door thickness 45 mm (including any glass holder for glazed door).
- ▶ Max. door weight 100 kg (150 kg on request).
- ▶ Max. electrical box depth 40 mm (2 boxes are supplied if wiring-ready on one pocket; 4 boxes if wiring-ready on both pockets).
- ▶ Non-standard positions for the electrical boxes are possible (subject to the approval of our Technical Dept.).
- ▶ ECLISSE counterframes can host any sliding door panel of standard dimensions available on the market.
- ▶ Install at finished floor level.
- \* Listed measures refers to wooden door panels only.

## ACCESSORIES

- ▶ Double door co-ordination for CLASSIC
- ▶ ECLISSE BIAS®
- ▶ ECLISSE BIAS® DS
- ▶ ECLISSE PUSH&PULL C
- ▶ Motorisation
- ▶ Anti-warp profile

# ECLISSE LUCE DOUBLE

SOLID WALL



**SYSTEMS FOR DOUBLE DOOR** - Measures related to Italian standards, other dimensions available

PASSAGE SIZE <b>L x H</b>	OVERALL DIMENSIONS			DOOR PANEL*	
	<b>C x H1</b>	<b>A</b>	<b>B</b>	<b>DW</b>	<b>DH</b>
1200 x 2000/2100	2530 x 2090/2190	1250	625	615 ÷ 635	2010/2110
1300 x 2000/2100	2830 x 2090/2190	1350	725	665 ÷ 735	2010/2110
1400 x 2000/2100	2930 x 2090/2190	1450	725	715 ÷ 735	2010/2110
1500 x 2000/2100	3230 x 2090/2190	1550	825	765 ÷ 835	2010/2110
1600 x 2000/2100	3330 x 2090/2190	1650	825	815 ÷ 835	2010/2110
1700 x 2000/2100	3630 x 2090/2190	1750	925	865 ÷ 935	2010/2110
1800 x 2000/2100	3730 x 2090/2190	1850	925	915 ÷ 935	2010/2110
1900 x 2000/2100	4030 x 2090/2190	1950	1025	965 ÷ 1035	2010/2110
2000 x 2000/2100	4130 x 2090/2190	2050	1025	1015 ÷ 1035	2010/2110

FINISHED WALL = <b>FW</b>	BRICKS = <b>Br</b>	INTERNAL PASSAGE = <b>IP</b>
<b>150</b> →	120	64

Dimensions are given in mm

## NON-STANDARD SIZES

- ▶ Passage width 600+600÷1300+1300 mm.
- ▶ Passage height 1000÷2600 mm.

## NOTES

- ▶ Max. door thickness 45 mm (including any glass holder for glazed door).
- ▶ Max. door weight 100 kg (150 kg on request).
- ▶ Max. electrical box depth 40 mm (2 boxes are supplied if wiring-ready on one pocket; 4 boxes if wiring-ready on both pockets).
- ▶ Non-standard positions for the electrical boxes are possible (subject to the approval of our Technical Dept.).
- ▶ ECLISSE counterframes can host any sliding door panel of standard dimensions available on the market.
- ▶ Install at finished floor level.
- \* Listed measures refers to wooden door panels only.

## ACCESSORIES

- ▶ Double door co-ordination for CLASSIC
- ▶ ECLISSE BIAS®
- ▶ ECLISSE BIAS® DS
- ▶ ECLISSE PUSH&PULL C
- ▶ Motorisation
- ▶ Anti-warp profile